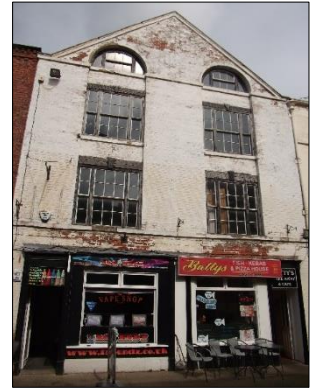


HISTORIC HEART OF GAINSBOROUGH

31 and 33 Lord Street

Description

A three storey brick building with attics of the late 18th/early 19th century. The attic space is formed by a pediment featuring two recessed lunette sash windows in an arched stone surround. The recess continues downward to the first floor level and houses two large window openings to the 1st and 2nd floor which are formed by an arrangement of multi-paned sash windows of 6/6 and 2/2. The building is grade II listed.



History



In this image No. 31 is to the left and No. 33 to the right, with a glimpse of its neighbour, The Tiger Inn to the far right. We can date the image to 1889. The traditional bow windows in both shops were a feature of Lord Street for many years before plate glass was available.

31 Lord Street

This shop is recorded as a pork butchers in 1845 and it changed hands 4 times in the following 90 years, in each case remaining as a pork butchers. It was taken over by a plumbers in 1928, then became Trentside Electric in 1937 until 2000.



The image to the right above shows the shops and their neighbours in the late 1880s.

33 Lord Street

In 1845 this shop was a confectioners, then a bakery, and for a time it was Tall's Plumbing and decorating shop, as shown in the photo above. Since 1900, No. 33 Lord Street has been operating as a fried fish shop. Started by John Oaks, and followed by a long line of fish fryers, it was eventually taken over by Leonard Batty in 1931.



This later image shows the shops as Trentside Electrical and Batty's Fish shop.

Planned improvements under the Townscape Heritage Initiative

- Overhaul/replace shared cast iron rainwater goods in cast iron.
- Overhaul and repair/ replace existing timber sash and casement windows to front elevation.
- Strip paint from front elevation brick and stone work, allow for repairs to brick and stone work and stone details, including localised replacement of perished bricks or piecing in stone sections. Repoint elevation in lime mortar where necessary.
- Rationalise and remove redundant wiring boxes /fixings, banner signs and fixtures to the frontage.
- Repair existing timber shopfronts to retain traditional elements, re-lead flashing over fascia and repair render to stallrisers to No.31, replace and render to No.33, replace doors with timber doors of traditional design and reinstate traditional hand painted signage to fascia.

Supported by The National Lottery Heritage Fund

